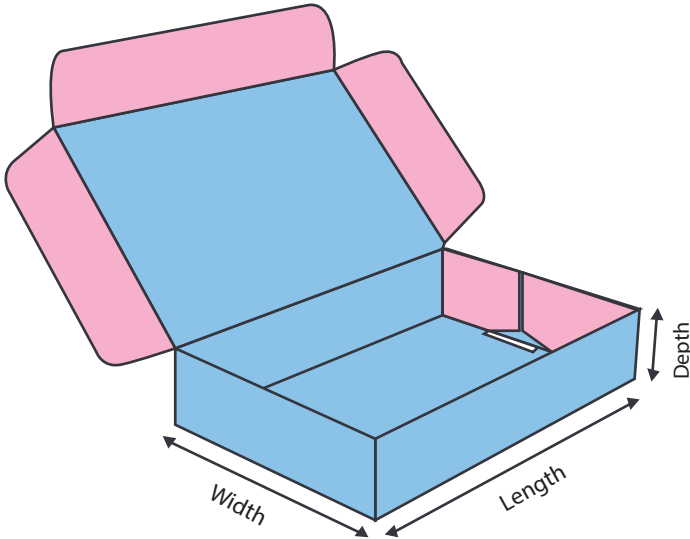
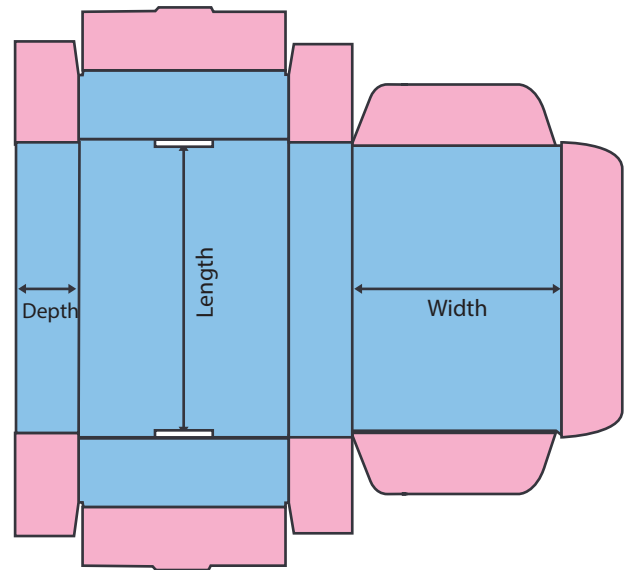


Artwork setup guide (Roll End Tuck Top).

3D view

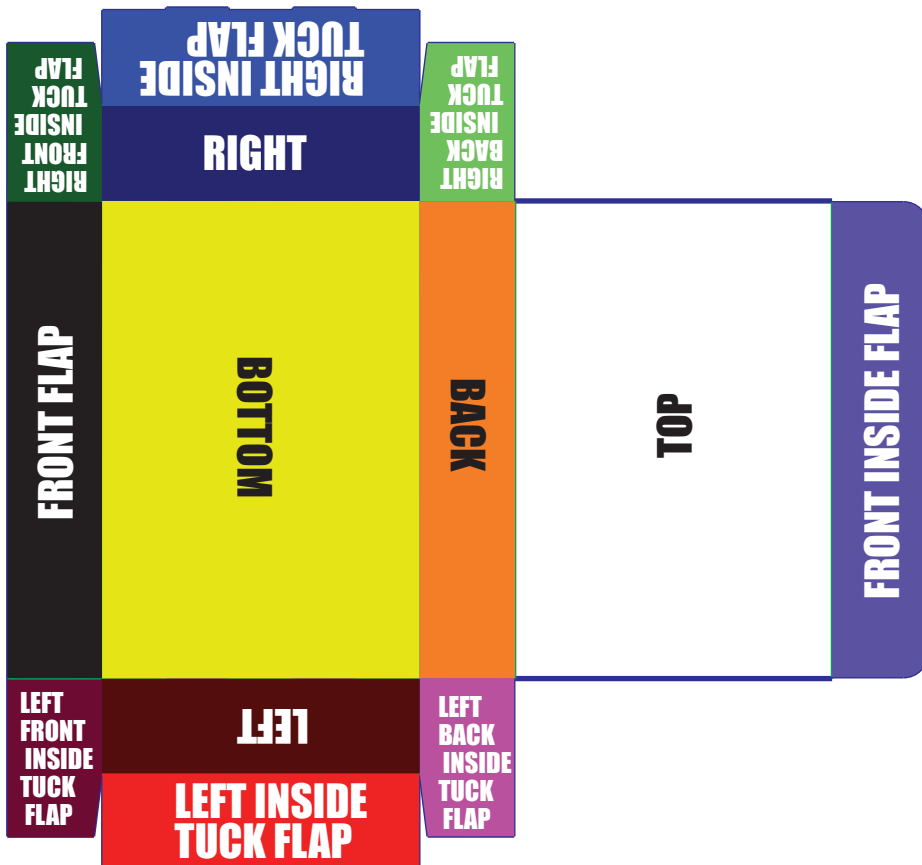


2D View: Flat Sheet (outside)



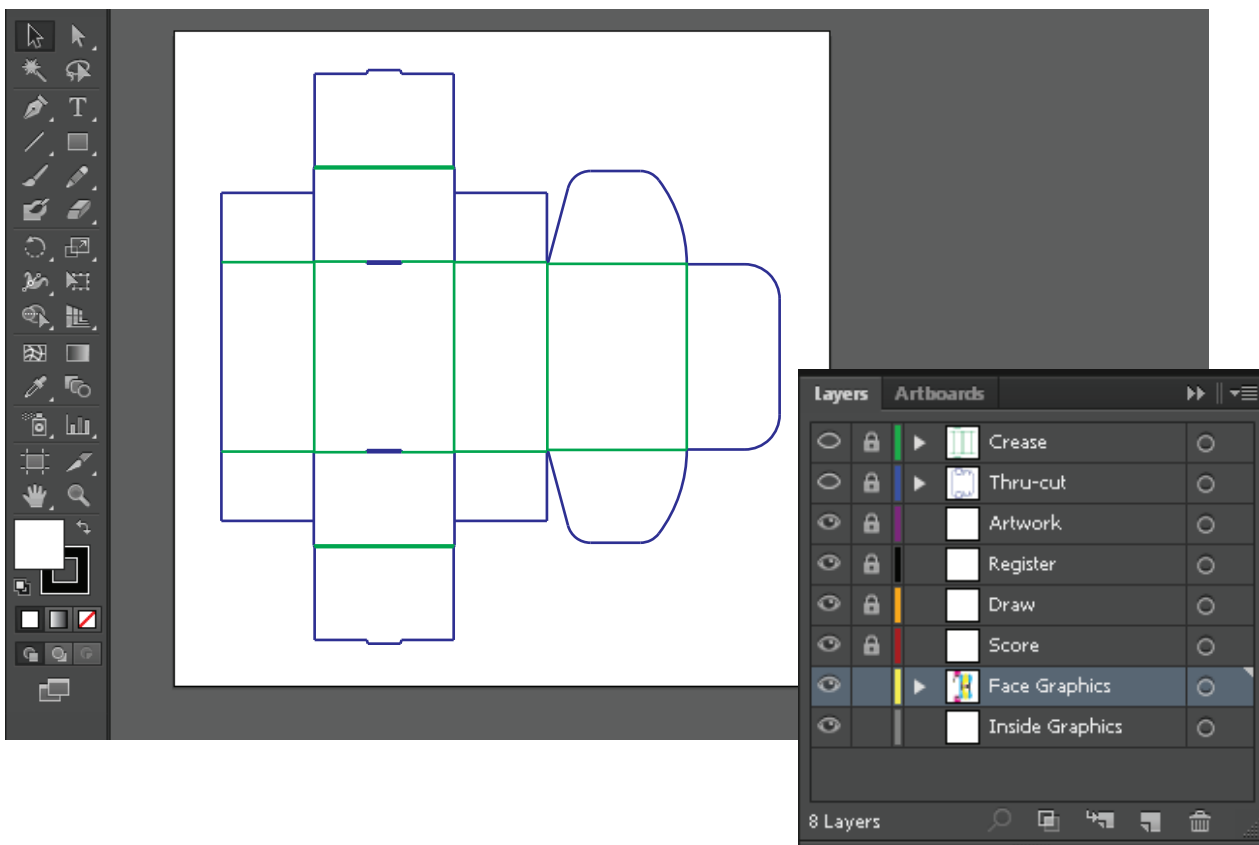
Visible area Non visible area

Descriptive view

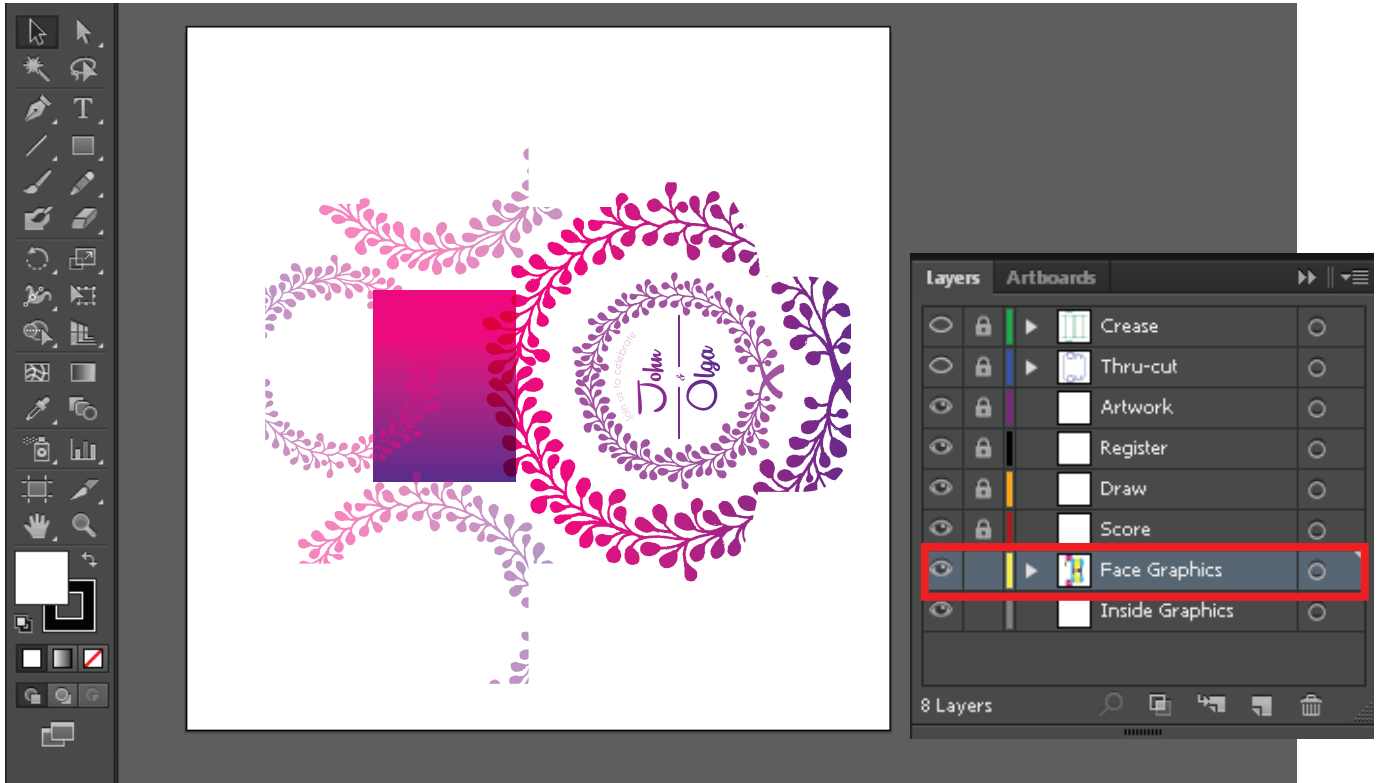


1. A custom template ([see below](#)) file will be created based on the Product Dimensions you entered when placing the order. This file will be sent by email. Refer to the 3D, 2D and Descriptive views ([page 1](#)) to get a better understand of the template file, and what artwork goes on each panels.

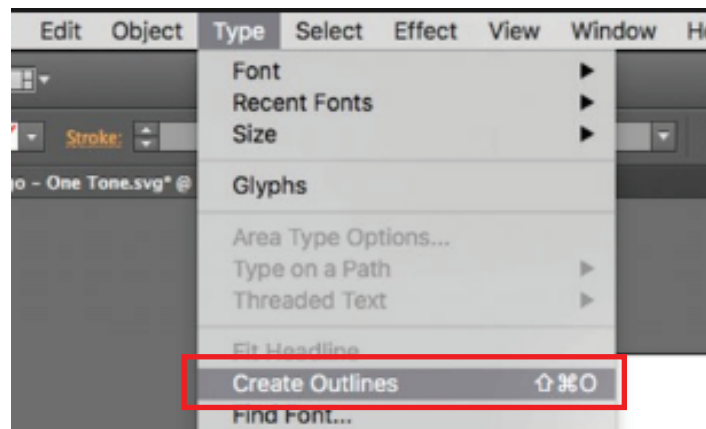
2. It is very important that you use Adobe Illustrator to open the template file and work on the artwork.



3. Your Template file will contain the following layers . **Use Only the Face Graphics Layer** to setup your artwork. **DO NOT DELETE OR CHANGE ANY OTHER LAYERS**. Doing so will cause error in production process.



4. Make sure to outline all the fonts before sending the final artwork.



5. Once you are done save as PDF and choose Press Quality settings and upload it here http://www.printpapa.com/eshop/pc/upload_files_options.asp

